

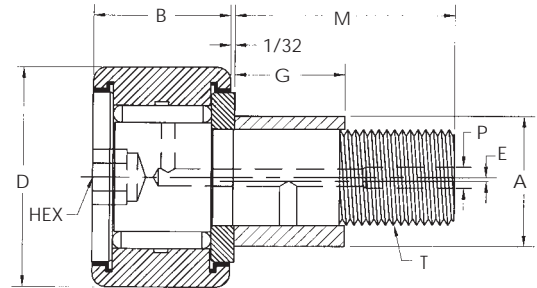
CR-XBE

Eccentric Stud

Hex-Drive Socket

Eccentric Stud
with Hex-Drive Socket
Sealed

X = Sealed



Dimensional Data (inches)

SMITH Bearing® Number	D Roller O.D. + .000 - .001	B Roller Width + .000 - .005	A Eccentric Bushing O.D. ± .001	G Eccentric Bushing † Length + .000 - .010	E Eccentricity ± .005	M Stud Length Class 2A	T Thread U.N.F.	HEX Size	P Lube Fitting ▲	Basic Dynamic Rating (lbs)
SEALED										
CR-1/2-XBE	.500	.375	.250	.375	.010	5/8	10-32	1/8	▲▲	970
CR-5/8-XBE	.625	.437	.375	.437	.015	3/4	1/4-28	1/8	▲▲	1320
CR-3/4-XBE	.750	.500	.500	.500	.030	7/8	3/8-24	3/16	3/16	2140
CR-7/8-XBE	.875									
CR-1-XBE	1.000	.625	.625	.500	.030	1	7/16-20	1/4	3/16	3030
CR-1 1/8-XBE	1.125									
CR-1 1/4-XBE	1.250	.750	.687	.625	.030	1 1/4	1/2-20	1/4	3/16	4470
CR-1 3/8-XBE	1.375									
CR-1 1/2-XBE	1.500	.875	.875	.750	.030	1 1/2	5/8-18	5/16	3/16	5560
CR-1 5/8-XBE	1.625									
CR-1 3/4-XBE	1.750	1.000	1.000	.875	.030	1 3/4	3/4-16	5/16	3/16	7870
CR-1 7/8-XBE	1.875									
CR-2-XBE	2.000	1.250	1.187	1.000	.030	2	7/8-14	7/16	3/16	10370
CR-2 1/4-XBE	2.250									
CR-2 1/2-XBE	2.500	1.500	1.375	1.125	.030	2 1/4	1-14	1/2	3/16	15280
CR-2 3/4-XBE	2.750									

▲ Relubricate through threaded end only.

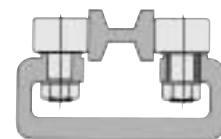
▲▲ Cannot be relubricated.

† Housing thickness should be a minimum of .010 longer than bushing length to provide positive clamping.

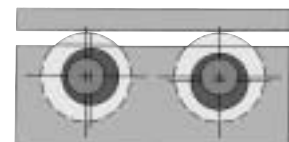
NOTE: Also available in Screwdriver version.

Adjustment for More Precise Positioning of Cam Followers

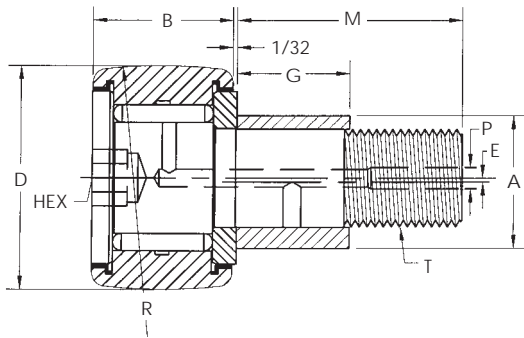
Hex-drive socket Cam Followers with a press fit eccentric bushing sleeve provide correct alignment and adjustment without costly preparation of close tolerance mounting holes and members. They eliminate problems of clearances, preloading and wear compensation and assure load sharing in multiple cam follower applications. The Hex-drive socket allows positive torque for locking and adjustment. A lock nut provides adequate clamping to hold bearing in desired position in most applications. Where more positive positioning or permanent locking is required, drill through the housing into the bushing and stud for doweling or set-screw.



Control of Clearance and Adjustment for Wear



In-line Adjustment Allows Greater Location Tolerance for Mounting Holes



CR-XBEC
Crowned • Eccentric Stud
 Hex-Drive Socket

Eccentric Stud with
 Crowned Outer Race
 Hex-Drive Socket
 Sealed
 X = Sealed

Dimensional Data (inches)

SMITH Bearing® Number	D Roller O.D. + .000 - .001	B Roller Width + .000 - .005	A Eccentric Bushing O.D. ± .001	G Eccentric Bushing † Length + .000 - .010	E Eccentricity ± .005	M Stud Length	T Thread U.N.F. Class 2A	HEX Size	P Lube Fitting Size ▲	Basic Dynamic Rating (lbs)	R Crown Radius (Inches)
SEALED											
CR-1/2-XBEC	.500	.375	.250	.375	.010	5/8	10-32	1/8	▲▲	970	7
CR-5/8-XBEC	.625	.4375	.375	.437	.015	3/4	1/4-28	1/8	▲▲	1320	8
CR-3/4-XBEC	.750	.500	.500	.500	.030	7/8	3/8-24	3/16	3/16	2140	10
CR-7/8-XBEC	.875										
CR-1-XBEC	1.000	.625	.625	.500	.030	1	7/16-20	1/4	3/16	3030	12
CR-1 1/8-XBEC	1.125										
CR-1 1/4-XBEC	1.250	.750	.687	.625	.030	1 1/4	1/2-20	1/4	3/16	4470	14
CR-1 3/8-XBEC	1.375										
CR-1 1/2-XBEC	1.500	.875	.875	.750	.030	1 1/2	5/8-18	5/16	3/16	5560	20
CR-1 5/8-XBEC	1.625										
CR-1 3/4-XBEC	1.750	1.000	1.000	.875	.030	1 3/4	3/4-16	5/16	3/16	7870	20
CR-1 7/8-XBEC	1.875										
CR-2-XBEC	2.000	1.250	1.187	1.000	.030	2	7/8-14	7/16	3/16	10370	24
CR-2 1/4-XBEC	2.250										
CR-2 1/2-XBEC	2.500	1.500	1.375	1.125	.030	2 1/4	1-14	1/2	3/16	15280	30
CR-2 3/4-XBEC	2.750										

▲ Relubricate through threaded end only.

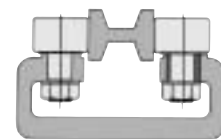
▲▲ Cannot be relubricated.

† Housing thickness should be a minimum of .010 longer than bushing length to provide positive clamping.

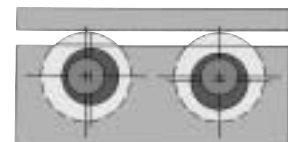
NOTE: Also available in Screwdriver version.

Adjustment for More Precise Positioning of Cam Followers

Hex-drive Socket Cam Followers with a press fit eccentric bushing sleeve provide correct alignment and adjustment without costly preparation of close tolerance mounting holes and members. They eliminate problems of clearances, preloading and wear compensation and assure load sharing in multiple cam follower applications. The Hex-drive socket allows positive torque for locking and adjustment. A lock nut provides adequate clamping to hold bearing in desired position in most applications. Where more positive positioning or permanent locking is required, drill through the housing into the bushing and stud for doweling or set-screw.



Control of Clearance and Adjustment for Wear



In-line Adjustment Allows Greater Location Tolerance for Mounting Holes