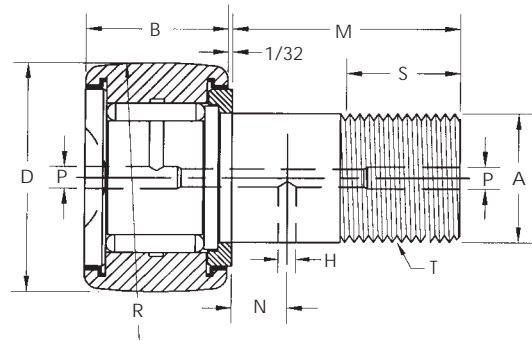


HR-C & HR-XC

Crowned • Heavy Stud

Screwdriver Slot

Heavy Stud
with Crowned Outer Race
Screw-Driver Slot
Sealed or Unsealed
X = Sealed



Dimensional Data (inches)

SMITH Bearing® Number		D Roller O.D. +.000 -.001	B Roller Width +.000 -.005	A Stud Dia. +.001 -.000	M Stud Length	S Eff. Thread Min.	T Thread U.N.F. Class 2A	N Oil Hole Location	H Oil Hole Dia.	P Lube Fitting Size	Min. Boss Dia.	Recom. Bore +.0005 -.0000	Recom. Torque (lbs-in)	Basic Dynamic Rating (lbs)	Max Static Capacity (lbs)	R Radius Crown (Inches)
UNSEALED	SEALED															
HR-1/2-C	HR-1/2-XC	.500	.375	.250	5/8	1/4	1/4-28	-	-	*1/8	19/64	.2500	50	970	1590	7
HR-5/8-C	HR-5/8-XC	.625	.437	.3125	3/4	5/16	5/16-24	-	-	*1/8	23/64	.3125	75	1210	2500	8
HR-3/4-C	HR-3/4-XC	.750	.500	.4375	7/8	3/8	7/16-20	1/4	3/32	3/16	1/2	.4375	300	2140	4150	10
HR-7/8-C	HR-7/8-XC	.875														
HR-1-C	HR-1-XC	1.000	.625	.625	1	1/2	5/8-18	1/4	3/32	3/16	3/4	.6250	500	2850	6200	12
HR-1 1/8-C	HR-1 1/8-XC	1.125														
HR-1 1/4-C	HR-1 1/4-XC	1.250	.750	.750	1 1/4	5/8	3/4-16	5/16	3/32	3/16	7/8	.7500	1000	4060	8690	14
HR-1 3/8-C	HR-1 3/8-XC	1.375														
HR-1 1/2-C	HR-1 1/2-XC	1.500	.875	.875	1 1/2	3/4	7/8-14	3/8	3/32	3/16	15/16	.8750	2000	5330	11300	20
HR-1 5/8-C	HR-1 5/8-XC	1.625														
HR-1 3/4-C	HR-1 3/4-XC	1.750	1.000	1.000	1 3/4	7/8	1-14	7/16	3/32	3/16	1 3/32	1.000	2500	7600	15870	20
HR-1 7/8-C	HR-1 7/8-XC	1.875														
HR-2-C	HR-2-XC	2.000	1.250	1.125	2	1	1 1/8-12	1/2	5/32	3/16	1 7/32	1.1250	3000	10050	22000	24
HR-2 1/4-C	HR-2 1/4-XC	2.250														
HR-2 1/2-C	HR-2 1/2-XC	2.500	1.500	1.250	2 1/4	1 1/8	1 1/4-12	9/16	5/32	3/16	1 5/16	1.2500	4000	15280	33000	30
HR-2 3/4-C	HR-2 3/4-XC	2.750														
HR-3-C	HR-3-XC	3.000	1.750	1.500	2 1/2	1 1/4	1 1/2-12	5/8	5/32	1/4	1 3/4	1.5000	5000	20200	49900	30
HR-3 1/4-C	HR-3 1/4-XC	3.250														
HR-3 1/2-C	HR-3 1/2-XC	3.500	2.000	1.750	2 3/4	1 3/8	1 3/4-12	11/16	5/32	1/4	1 15/16	1.7500	6000	29660	63300	30
HR-4-C	HR-4-XC	4.000	2.250	2.000	3 1/2	1 1/2	2-12	3/4	5/32	1/4	2 1/4	2.0000	8000	35980	90000	30

* Cannot be relubricated through threaded end.