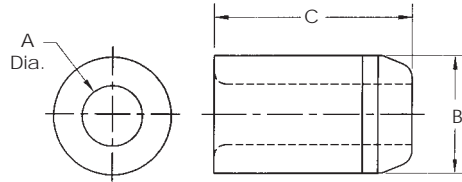


Headless Liner

Type L

Finish Ground & Unground O.D.



Inside Diameter Range Size (A)	Outside Diameter		Length Inches (C)	ANSI Symbol†	Price Code
	Finish Ground Size	Unground Size			
3/16" (.1876 - .1879)	.3141 .3138	5/16"	.327 .322	1/4 L-20-4 110	
			5/16 L-20-5 112		
			3/8 L-20-6 113		
			1/2 L-20-8 114		
			5/8 L-20-10 115		
			3/4 L-20-12 117		
1/4" (.2501 - .2504)	.4392 .4389	7/16"	.453 .448	1/4 L-28-4 105	
			5/16 L-28-5 106		
			3/8 L-28-6 109		
			1/2 L-28-8 110		
			5/8 L-28-10 112		
			3/4 L-28-12 113		
5/16" (.3126 - .3129)	.5017 .5014	1/2"	.520 .515	1/4 L-32-4 105	
			5/16 L-32-5 106		
			3/8 L-32-6 109		
			1/2 L-32-8 110		
			5/8 L-32-10 112		
			3/4 L-32-12 113		
			1 L-32-16 118		
			1 3/8 L-32-22 125		
5/16" (.3126 - .3129)	.5642 .5639	9/16"	.582 .577	1/4 L-36-4 110	
			5/16 L-36-5 105		
			3/8 L-36-6 107		
			1/2 L-36-8 107		
			5/8 L-36-10 109		
			3/4 L-36-12 110		
3/8" (.3751 - .3754)	.6267 .6264	5/8"	.645 .640	1/4 L-40-4 110	
			5/16 L-40-5 105		
			3/8 L-40-6 107		
			1/2 L-40-8 107		
			5/8 L-40-10 109		
			3/4 L-40-12 110		
7/16" (.4377 - .4380)	.6267 .6264	5/8"	.645 .640	1/4 L-40-4 110	
			5/16 L-40-5 105		
			3/8 L-40-6 107		
			1/2 L-40-8 107		
			5/8 L-40-10 109		
			3/4 L-40-12 110		
1/2" (.5002 - .5005)	.7518 .7515	3/4"	.770 .765	5/16 L-48-5 106	
			3/8 L-48-6 110		
			1/2 L-48-8 110		
			3/4 L-48-12 112		
			1 L-48-16 114		
			1 3/8 L-48-22 125		
			1 1/2 L-48-24 128		
			1 3/4 L-48-28 132		
2 1/8 L-48-34 142					
9/16" (.5627 - .5630)	.8768 .8765	3/4"	.895 .890	5/16 L-56-5 119	
			3/8 L-56-6 121		
			1/2 L-56-8 115		
			5/8 L-56-10 117		
			3/4 L-56-12 117		
			1 L-56-16 119		
1 1/4 L-56-20 124					

Inside Diameter Range Size (A)	Outside Diameter		Length Inches (C)	ANSI Symbol†	Price Code
	Finish Ground Size	Unground Size			
5/8" (.6252 - .6255)	.8768 .8765	7/8"	.895 .890	5/16 L-56-5 119	
			3/8 L-56-6 121		
			1/2 L-56-8 115		
			5/8 L-56-10 117		
			3/4 L-56-12 117		
			1 L-56-16 119		
3/4" (.7503 - .7506)	1.0018 1.0015	1"	1.020 1.015	1 1/4 L-56-20 124	
			1/2 L-64-8 117		
			3/4 L-64-12 117		
			1 L-64-16 120		
			1 3/8 L-64-22 124		
			1 1/2 L-64-24 130		
7/8" (.8754 - .8757)	1.2520 1.2517	1 1/4"	1.270 1.265	1 3/4 L-64-28 135	
			1/2 L-64-34 141		
			5/8 L-64-40 151		
			3/4 L-64-48 199		
			1/2 L-80-8 140		
			5/8 L-80-10 136		
1" (1.0004 - 1.0007)	1.3772 1.3768	1 3/8"	1.395 1.390	3/4 L-80-12 131	
			1 L-80-16 140		
			1 1/4 L-80-20 148		
			1 1/2 L-80-24 152		
			1/2 L-88-8 141		
			3/4 L-88-12 131		
1 3/8" (1.3756 - 1.3760)	1.7523 1.7519	1 3/4"	1.770 1.765	1 L-88-16 141	
			1 3/8 L-88-22 149		
			1 1/2 L-88-24 153		
			1 3/4 L-88-28 161		
			2 1/8 L-88-34 174		
			2 1/2 L-88-40 185		
1 3/4" (1.7508 - 1.7512)	2.2525 2.2521	2 1/4"	2.270 2.265	3 L-88-48 222	
			3/4 L-112-12 156		
			1 L-112-16 149		
			1 3/8 L-112-22 156		
			1 1/2 L-112-24 163		
			1 3/4 L-112-28 166		
2 1/4" (2.2510 - 2.2515)	2.7526 2.7522	2 3/4"	2.770 2.765	2 1/8 L-112-34 182	
			2 1/2 L-112-40 193		
			3 L-112-48 240		
			3/4 L-144-12 178		
			1 L-144-16 167		
			1 3/8 L-144-22 178		
2 3/4" (2.7510 - 2.7515)	2.7526 2.7522	3"	2.770 2.765	1 1/2 L-144-24 183	
			1 3/4 L-144-28 187		
			2 1/8 L-144-34 204		
			2 1/2 L-144-40 216		
			3 L-144-48 253		
			3/4 L-176-12 188		
2 1/2" (2.2510 - 2.2515)	2.7526 2.7522	2 3/4"	2.770 2.765	1 L-176-16 178	
			1 3/8 L-176-22 189		
			1 1/2 L-176-24 194		
			1 3/4 L-176-28 201		
			2 1/8 L-176-34 212		
			2 1/2 L-176-40 225		
2 1/2" (2.2510 - 2.2515)	2.7526 2.7522	2 3/4"	2.770 2.765	3 L-176-48 255	
			3/4 L-176-12 188		
			1 L-176-16 178		
			1 3/8 L-176-22 189		
			1 1/2 L-176-24 194		
			1 3/4 L-176-28 201		