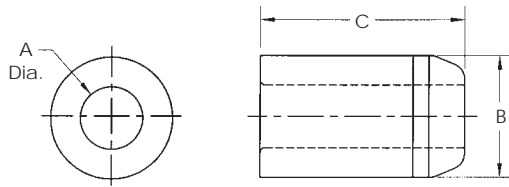


Headless Press-Fit

Type P

Finish Ground & Unground O.D.



Inside Diameter Range Size (A)	Outside Diameter (B)		Length Inches (C)	ANSI Symbol†	Price Code
	Finish Ground Size	Unground Size			
#80 - #70 (.0135 - .0280)	.1578 .1575	5/32"	1/4	P-10-4	203
			5/16	P-10-5	209
			3/8	P-10-6	211
			*1/2	P-10-8	214
#69 - 3/64" (.0292 - .0469)	.1578 .1575	5/32"	1/4	P-10-4	190
			5/16	P-10-5	193
			3/8	P-10-6	195
			1/2	P-10-8	199
			*3/4	P-10-12	209
#55 - 1/16" (.0520 - .0625)	.1578 .1575	5/32"	1/4	P-10-4	166
			5/16	P-10-5	170
			3/8	P-10-6	173
			1/2	P-10-8	174
#55 - 1/16" (.0520 - .0625)	.1891 .1888	3/16"	1/4	P-12-4	166
			5/16	P-12-5	170
			3/8	P-12-6	173
			1/2	P-12-8	174
#52 - #39 (.0635 - .0995)	.1891 .1888	3/16"	*5/8	P-12-10	179
			*3/4	P-12-12	182
			1/4	P-12-4	119
			5/16	P-12-5	125
			3/8	P-12-6	127
#80 - #70 (.0135 - .0280)	.2046 .2043	13/64"	1/2	P-12-8	130
			5/8	P-12-10	132
			*3/4	P-12-12	135
			1/4	P-13-4	203
			5/16	P-13-5	209
#69 - 3/64" (.0292 - .0469)	.2046 .2043	13/64"	3/8	P-13-6	211
			*1/2	P-13-8	214
			1/4	P-13-4	190
			5/16	P-13-5	193
#55 - 1/16" (.0520 - .0625)	.2046 .2043	13/64"	3/8	P-13-6	195
			*1/2	P-13-8	199
			*3/4	P-13-12	209
			1/4	P-13-4	166
			5/16	P-13-5	170
#52 - #39 (.0635 - .0995)	.2046 .2043	13/64"	3/8	P-13-6	173
			1/2	P-13-8	174
			*3/4	P-13-12	182
			*1	P-13-16	195
			1/4	P-13-4	119
#52 - #39 (.0635 - .0995)	.2046 .2043	13/64"	5/16	P-13-5	125
			3/8	P-13-6	128
			1/2	P-13-8	130
			*3/4	P-13-12	135
			*1	P-13-16	140
#52 - #39 (.0635 - .0995)	.2046 .2043	13/64"	*13/8	P-13-22	171

Inside Diameter Range Size (A)	Outside Diameter (B)		Length Inches (C)	ANSI Symbol†	Price Code
	Finish Ground Size	Unground Size			
#40 - 9/64" (.0980 - .1406)	.2516 .2513	1/4"	1/4	P-16-4	115
			5/16	P-16-5	118
			3/8	P-16-6	122
			1/2	P-16-8	125
			5/8	P-16-10	128
			*3/4	P-16-12	131
			*1	P-16-16	136
			*13/8	P-16-22	169
			*11/2	P-16-24	174
1/8" - #10 (.1250 - .1935)	.3141 .3138	5/16"	*13/4	P-16-28	179
			1/4	P-20-4	110
			5/16	P-20-5	112
			3/8	P-20-6	113
			1/2	P-20-8	114
			5/8	P-20-10	115
			3/4	P-20-12	117
			*1	P-20-16	119
			*13/8	P-20-22	140
#10 - #1 (.1935 - .2280) Includes 1/4"	.3766 .3763	3/8"	*11/2	P-20-24	150
			*13/4	P-20-28	159
			1/4	P-24-4	105
			5/16	P-24-5	106
			3/8	P-24-6	109
			1/2	P-24-8	110
3/16" - F (.1875 - .2570) Includes .2510	.4078 .4075	13/32"	5/8	P-24-10	112
			3/4	P-24-12	113
			*1	P-24-16	118
			1/4	P-26-4	105
			5/16	P-26-5	106
			3/8	P-26-6	109
A - L (.2340 - .2900) Includes .2510	.4392 .4389	7/16"	1/2	P-26-8	110
			3/4	P-26-12	113
			*1	P-26-16	118
			*13/8	P-26-22	125
			*11/2	P-26-24	131
			*13/4	P-26-28	136
A - L (.2340 - .2900) Includes .2510	.4392 .4389	7/16"	*13/4	P-26-28	136
			1/4	P-28-4	105
			5/16	P-28-5	106
			3/8	P-28-6	109
			1/2	P-28-8	110
			5/8	P-28-10	112
3/16" - O (.1875 - .3160) Includes 3/8"	.5017 .5014	1/2"	3/4	P-28-12	113
			*1	P-28-16	118
			1/4	P-32-4	105
			5/16	P-32-5	106
			3/8	P-32-6	109
			1/2	P-32-8	110
			3/4	P-32-12	113
			*1	P-32-16	118
			*13/8	P-32-22	125
3/16" - O (.1875 - .3160) Includes 3/8"	.5017 .5014	1/2"	*11/2	P-32-24	131
			*13/4	P-32-28	136
			*21/8	P-32-34	193

† All bushings are finished ground unless the letter "U" appears with the bushings type or the ANSI symbol.

* Counterbored, leaving correct drill bearing and chip clearance. Metric sizes are available.

Headless Press-Fit

Type P

Finish Ground & Unground O.D.

Chart continued from previous page

Inside Diameter Range Size (A)	Outside Diameter (B)		Length Inches (C)	ANSI Symbol†	Price Code
	Finish Ground Size	Unground Size			
M – 11/32" (.2950 – .3437)	.5642 .5639	9/16"	1/4	P-36-4	110
			5/16	P-36-5	105
			3/8	P-36-6	107
			1/2	P-36-8	107
			5/8	P-36-10	109
			3/4	P-36-12	110
			1	P-36-16	112
5/16" – 7/16" (.3125 – .4375) Includes 1/2"	.6267 .6264	5/8"	1/4	P-40-4	110
			5/16	P-40-5	105
			3/8	P-40-6	107
			1/2	P-40-8	107
			5/8	P-40-10	109
			3/4	P-40-12	110
			1	P-40-16	112
			1 1/4	P-40-20	124
			1 3/8	P-40-22	124
			1 1/2	P-40-24	126
			1 3/4	P-40-28	131
			2 1/8	P-40-30	141
			5/16" – 17/32" (.3125 – .5312) Includes 5/8"	.7518 .7515	3/4"
5/16	P-12-5	106			
3/8	P-12-6	110			
1/2	P-12-8	110			
5/8	P-12-10	112			
3/4	P-13-12	112			
1	P-13-16	114			
1 1/4	P-13-20	125			
1 3/8	P-13-22	125			
1 1/2	P-13-24	128			
1 3/4	P-13-28	132			
2 1/8	P-13-34	142			
2 1/2	P-13-40	193			
1/2" – 21/32" (.5000 – .6562) Includes 3/4"	.8768 .8765	7/8"	5/16	P-56-5	119
			3/8	P-56-6	121
			1/2	P-56-8	115
			5/8	P-56-10	117
			3/4	P-56-12	117
			1	P-56-16	119
			1 1/4	P-56-20	124
			1 3/8	P-56-22	124
			1 1/2	P-56-24	128
			1 3/4	P-56-28	133
			2 1/8	P-56-34	141
2 1/2	P-56-40	151			
1/2" – 49/64" (.5000 – .7656)	1.0018 1.0015	1"	1/2	P-64-8	117
			5/8	P-64-10	117
			3/4	P-64-12	117
			1	P-64-16	120
			1 1/4	P-64-20	124
			1 3/8	P-64-22	124
			1 1/2	P-64-24	130
			1 3/4	P-64-28	135
			2 1/8	P-64-34	141
			2 1/2	P-64-40	151
			3	P-64-48	199

Inside Diameter Range Size (A)	Outside Diameter (B)		Length Inches (C)	ANSI Symbol†	Price Code
	Finish Ground Size	Unground Size			
49/64" – 27/32" (.7656 – .8437)	1.1270 1.1267	1 1/8"	1/2	P-72-8	140
			5/8	P-72-10	136
			3/4	P-72-12	131
			1	P-72-16	140
			1 1/2	P-72-20	148
			1 1/2	P-72-24	152
			1 3/4	P-72-28	159
55/64" – 15/16" (.8594 – .9375)	1.2520 1.2517	1 1/4"	5/8	P-80-10	136
			3/4	P-80-12	131
			1	P-80-16	140
			1 3/8	P-80-20	148
			1 1/2	P-80-24	152
			1 3/4	P-80-28	159
			2	P-80-32	171
5/8" – 11/32" (.6250 – 1.0312)	1.3772 1.3768	1 3/8"	1/2	P-88-8	141
			5/8	P-88-10	138
			3/4	P-88-12	131
			1	P-88-16	141
			1 1/4	P-88-20	149
			1 3/8	P-88-22	149
			1 1/2	P-88-24	153
			1 3/4	P-88-28	161
			2	P-88-32	173
			2 1/8	P-88-34	174
			2 1/2	P-88-40	185
3	P-88-48	222			
1 1/64" – 11/8" (1.0156 – 1.1250)	1.5022 1.5018	1 1/2"	3/4	P-96-12	156
			1	P-96-16	149
			1 1/4	P-96-20	156
			1 1/2	P-96-24	163
			1 3/4	P-96-28	166
			2	P-98-32	182
2 1/4	P-98-36	188			
1" – 125/64" (1.0000 – 1.3906)	1.7523 1.7519	1 3/4"	3/4	P-112-12	156
			1	P-112-16	149
			1 3/8	P-112-22	156
			1 1/2	P-112-24	163
			1 3/4	P-112-28	166
			2 1/8	P-112-34	182
			2 1/2	P-112-40	193
3	P-112-48	240			
1 3/8" – 149/64" (1.3750 – 1.7656)	2.2525 2.2521	2 1/4"	1	P-144-16	167
			1 3/8	P-144-22	178
			1 1/2	P-144-24	183
			1 3/4	P-144-28	187
			2 1/8	P-144-34	204
			2 1/2	P-144-40	216
			3	P-144-48	253

† All bushings are finished ground unless the letter "U" appears with the bushings type or the ANSI symbol.

* Counterbore, leaving correct drill bearing and chip clearance. Metric sizes are available.