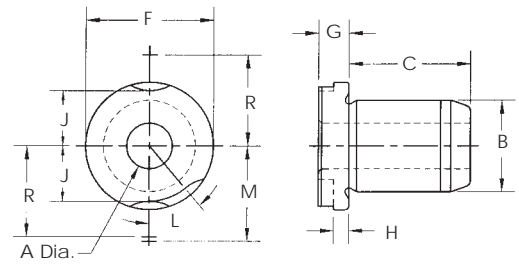


## Slip-Fixed Renewable Type SF

Finish Ground O.D.



Inside Diameter Range Size (A)	Outside Diameter Finish Ground Size (B)	Length Inches (C)	ANSI Symbol	Price Code	Lock Screw Clamps		
#80 - #70 (.0135 - .0280)	3/16"	*1/4	SF-12-4	233	LS-O		
		*5/16	SF-12-5	235			
		*3/8	SF-12-6	237			
		*1/2	SF-12-8	238			
		*5/8	SF-12-10	248			
		*3/4	SF-12-12	260			
#69 - 3/64" (.0292 - .0469)	3/16"	1/4	SF-12-4	214	LS-O		
		*5/16	SF-12-5	216			
		*3/8	SF-12-6	219			
		*1/2	SF-12-8	221			
		*5/8	SF-12-10	225			
		*3/4	SF-12-12	230			
#55 - 1/16" (.0520 - .0625)	3/16"	1/4	SF-12-4	182	LS-O		
		*5/16	SF-12-5	184			
		*3/8	SF-12-6	186			
		*1/2	SF-12-8	187			
		*5/8	SF-12-10	191			
		*3/4	SF-12-12	197			
#52 - #40 (.0635 - .0980)	3/16"	1/4	SF-12-4	141	LS-O		
		*5/16	SF-12-5	143			
		*3/8	SF-12-6	144			
		*1/2	SF-12-8	147			
		*5/8	SF-12-10	151			
		*3/4	SF-12-12	154			
#39 - 9/64" (.0995 - .1406)	1/4"	1/4	SF-16-4	136	TW-2		
		5/16	SF-16-5	136			
		*3/8	SF-16-6	138			
		*1/2	SF-16-8	141			
		*5/8	SF-16-10	146			
		*3/4	SF-16-12	150			
#80 - #70 (.0135 - .0280)	5/16"	*1/4	SF-20-4	233	LS-1 RC-01 RK-01 RK-11		
		*5/16	SF-20-5	235			
		*3/8	SF-20-6	237			
		*1/2	SF-20-8	238			
		*3/4	SF-20-12	260			
		#69 - 3/64" (.0292 - .0469)	5/16"	*5/16		SF-20-5	216
*3/8	SF-20-6	219					
*1/2	SF-20-8	221					
*3/4	SF-20-12	230					
#55 - 1/16" (.0520 - .0625)	5/16"	*5/16		SF-20-5	184	LS-1 RC-01 RK-01 RK-11	
*3/8		SF-20-6		186			
*1/2		SF-20-8	187				
*3/4		SF-20-12	197				
#52 - #43 (.0635 - .0890)		5/16"	5/16	SF-20-5	142		LS-1 RC-01 RK-01 RK-11
*3/8			SF-20-6	144			
*1/2	SF-20-8		147				
*3/4	SF-20-12		154				
*1	SF-20-16		172				
#42 - #31 (.0935 - .1200)	5/16"		5/16	SF-20-5	136	LS-1 RC-01 RK-01 RK-11	
3/8		SF-20-6	138				
*1/2		SF-20-8	141				
*3/4		SF-20-12	150				
*1		SF-20-16	163				
*1 3/8		SF-20-22	185				

Inside Diameter Range Size (A)	Outside Diameter Finish Ground Size (B)	Length Inches (C)	ANSI Symbol	Price Code	Lock Screw Clamps
1/8" - #10 (.1250 - .1935)	5/16"	5/16	SF-20-5	135	LS-1 RC-01 RK-01 RK-11
		3/8	SF-20-6	136	
		1/2	SF-20-8	139	
		5/8	SF-20-10	143	
		*3/4	SF-20-12	148	
		*1	SF-20-16	161	
#10 - #1 (.1935 - .2280)	3/8"	*1 3/8	SF-20-22	184	TW-2
		1/4	SF-24-4	117	
		5/16	SF-24-5	120	
		*3/8	SF-24-6	122	
		1/2	SF-24-8	125	
		5/8	SF-24-10	126	
A - L (.2340 - .2900)	7/16"	1/4	SF-28-4	117	TW-2
		5/16	SF-28-5	120	
		3/8	SF-28-6	122	
		1/2	SF-28-8	125	
		5/8	SF-28-10	126	
		*1	SF-28-12	128	
#28 - 3/16" (.1405 - .1875)	1/2"	*1	SF-20-16	135	LS-1 RC-01 RK-01 RK-11
		5/16	SF-32-5	126	
		3/8	SF-32-6	128	
		1/2	SF-32-8	130	
		*3/4	SF-32-12	135	
		*1	SF-32-16	143	
#12 - 11/32" (.1890 - .3437)	1/2"	*1 3/8	SF-32-22	152	LS-1 RC-01 RK-01 RK-11
		*1 1/2	SF-32-24	157	
		*1 3/4	SF-32-28	164	
		5/16	SF-32-5	120	
		3/8	SF-32-6	122	
		1/2	SF-32-8	124	
M - 11/32" (.2950 - .3437)	9/16"	*1	SF-32-16	135	TW-2
		*1 3/8	SF-32-22	147	
		*1 1/2	SF-32-24	150	
		*1 3/4	SF-32-28	155	
		*2 1/8	SF-32-34	221	
		1/4	SF-36-4	117	
5/16	SF-36-5	120			
3/8	SF-36-6	122			
1/2	SF-36-8	125			
5/8	SF-36-10	126			
1	SF-36-12	128			
		1	SF-36-16	135	

\* Counterbore, leaving correct drill bearing and chip clearance. Metric sizes are available.

**Slip-Fixed Renewable  
Type SF**

**Finish Ground O.D.**

Continued from previous page

Range Size (A)	Finish Ground Size (B)	Length Inches (C)	ANSI Symbol	Price Code	Lock Screw Clamps
S - 7/16" (.3480 - .4375)	5/8" .6250 .6248	3/8	SF-40-6	123	TW-2
		1/2	SF-40-8	123	
		5/8	SF-40-10	125	
		3/4	SF-40-12	126	
		1	SF-40-16	129	
		1 1/4	SF-40-20	147	
9/32" - 9/16" (.2812 - .5625)	3/4" .7500 .7498	3/8	SF-48-6	122	LS-1 RC-01 RK-01 RK-11
		1/2	SF-48-8	123	
		3/4	SF-48-12	126	
		1	SF-48-16	130	
		1 3/8	SF-48-22	147	
		1 1/2	SF-48-24	151	
		1 3/4	SF-48-28	156	
		2 1/8	SF-48-34	166	
		*2 1/2	SF-48-40	226	
		*3	SF-48-48	257	
35/64" - 21/32" (.5469 - .6562)	7/8" .8750 .8748	1/2	SF-56-8	135	TW-7
		5/8	SF-56-10	136	
		3/4	SF-56-12	137	
		1	SF-56-16	141	
		1 3/8	SF-56-20	148	
		1 1/2	SF-56-24	153	
15/32" - 25/32" (.4687 - .7812)	1" 1.0000 .9998	1/2	SF-64-8	135	LS-2 RC-02 RK-2 RK-12
		3/4	SF-64-12	136	
		1	SF-64-16	141	
		1 3/8	SF-64-22	148	
		1 1/2	SF-64-24	152	
		1 3/4	SF-64-28	161	
		2 1/8	SF-64-34	177	
		2 1/2	SF-64-40	234	
		3	SF-64-48	259	

Range Size (A)	Finish Ground Size (B)	Length Inches (C)	ANSI Symbol	Price Code	Lock Screw Clamps
23/32" - 1 1/16" (.7187 - 1.0625)	1 3/8" 1.3750 1.3747	3/4	SF-88-12	164	LS-2 RC-02 RK-2 RK-13
		1	SF-88-16	175	
		1 3/8	SF-88-22	184	
		1 1/2	SF-88-24	190	
		1 3/4	SF-88-28	198	
		2 1/8	SF-88-34	212	
		2 1/2	SF-88-40	244	
		3	SF-88-48	266	
31/32" - 1 13/32" (.9687 - 1.4062)	1 3/4" 1.7500 1.7497	3/4	SF-112-12	202	LS-3 RC-03 RK-3 RK-13
		1	SF-112-16	191	
		1 3/8	SF-112-22	202	
		1 1/2	SF-112-24	210	
		1 3/4	SF-112-28	220	
		2 1/8	SF-112-34	233	
		2 1/2	SF-112-40	252	
		3	SF-112-48	267	
1 11/32" - 1 7/8" (1.3437 - 1.8750)	2 1/4" 2.2500 2.2496	3/4	SF-144-12	239	LC-3 RC-03 RK-3 RK-13
		1	SF-144-16	228	
		1 3/8	SF-144-22	239	
		1 1/2	SF-144-24	243	
		1 3/4	SF-144-28	245	
		2 1/8	SF-144-34	256	
		2 1/2	SF-144-40	263	
		3	SF-144-48	271	

\* Counterbore, leaving correct drill bearing and chip clearance. Metric sizes are available.

Body O.D. (B)	DIMENSIONAL DATA ANSI FIXED RENEWABLE HEAD DIMENSIONS								Lock Screw
	(F)	(G)	(H)	(J)	(K)	(M)	(N)	(R)	
3/16"	5/16"	3/16"	3/32"	3/32"	55°			17/64"	LS-0
1/4"	7/16"	1/4"	3/32"	9/64"	30°		11/16"	21/64"	TW-2
5/16"	35/64"	1/4"	1/8"	11/64"	65°	5/8"		1/2"	LS-1
3/8"	5/8"	1/4"	1/8"	15/64"	30°			29/64"	TW-2
7/16"	5/8"	1/4"	1/8"	15/64"	30°			29/64"	TW-2
1/2"	51/64"	1/4"	1/8"	19/64"	65°	3/4"	25/32"	5/8"	LS-1
9/16"	7/8"	1/4"	1/8"	21/64"	30°			37/64"	TW-2
5/8"	7/8"	1/4"	1/8"	21/64"	30°			37/64"	TW-2
3/4"	1-3/64"	1/4"	1/8"	27/64"	50°	7/8"	57/64"	3/4"	LS-1
7/8"	1-1/4"	3/8"	3/16"	33/64"	30°			53/64"	TW-7
1"	1-27/64"	3/8"	3/16"	19/32"	35°	1-7/64"	1-9/64"	59/64"	LS-2
1-3/8"	1-51/64"	3/8"	3/16"	25/32"	30°	1-19/64"	1-21/64"	1-7/64"	LS-2
1-3/4"	2-19/64"	3/8"	3/16"	1"	30°	1-41/64"	1-33/64"	1-25/64"	LS-3
2-1/4"	2-51/64"	3/8"	3/16"	1-1/4"	25°	1-57/64"	1-49/64"	1-41/64"	LS-3